

# NuFeed<sup>®</sup>

FOR THE ADDITION TO LIVESTOCK RATIONS

Addition of NuFeed<sup>®</sup> to livestock rations gives protection against mycotoxins, reduces odour, improves animal health and is easy to use.



- A natural product
- Reduces feed costs
- Improves animal health
- Improves housed livestock environment

# NuFeed®

## THE NATURAL ADDITION TO IMPROVING LIVESTOCK FEED RATIONS

### MYCOTOXINS

Mycotoxins are toxic metabolites that are produced by fungi that grow on a wide variety of grains and animal feeds. This contamination can develop during plant growth, storage and processing. The toxins that have the highest negative effect in the animal industry are mainly found in cereal grains. Several factors influence mycotoxin production such as temperature, moisture, pH, the type of feed and the number of broken grains. The main mycotoxin producing fungi that possess major health risks are *Aspergillus*, *Fusarium* and *Penicillium*.

The presence of mycotoxins can cause considerable economic loss due to immune suppression and interference with feed conversion efficiency. In severe cases the toxicity causes death and reproductive failure.

These toxins can also be passed down the food chain affecting humans.

Considering Aflatoxin B1 is one of the most carcinogenic compounds discovered to date (The World Health Organisation), a responsibility lies with food producers to eliminate mycotoxins wherever possible. Other mycotoxins considered carcinogenic are Ochratoxin A and Aflatoxin M1 amongst others.

Excess ammonia in the digestive tract is toxic and detoxification requires energy. NuFeed® preferentially absorbs ammonia thereby conserving energy. Mycotoxin contaminated feeds and pastures adversely affect animal production, reproductive performance and can induce heat stress. NuFeed® naturally binds mycotoxins and carries them safely through the digestive tract.

NuFeed® slows the movement of digester through the animal and its reactive surface helps to maximise digestion process efficiency.

### IMPORTANT CHARACTERISTICS OF NUFEED

NuFeed® comes from large deposits of natural zeolite found south of Potorua in the central north island of New Zealand. These Zeolites are derived from lakebed sediments that were deposited during intense volcanic activity about 250,000 years ago.

Hot water (120°C) rising from subsurface thermal activity transformed the clays into soft rocks with ordered internal structural sequences.

Being young in geological terms, they possess different performance characteristics than other zeolites that are quarried in other parts of NZ, Australia, USA and Europe.

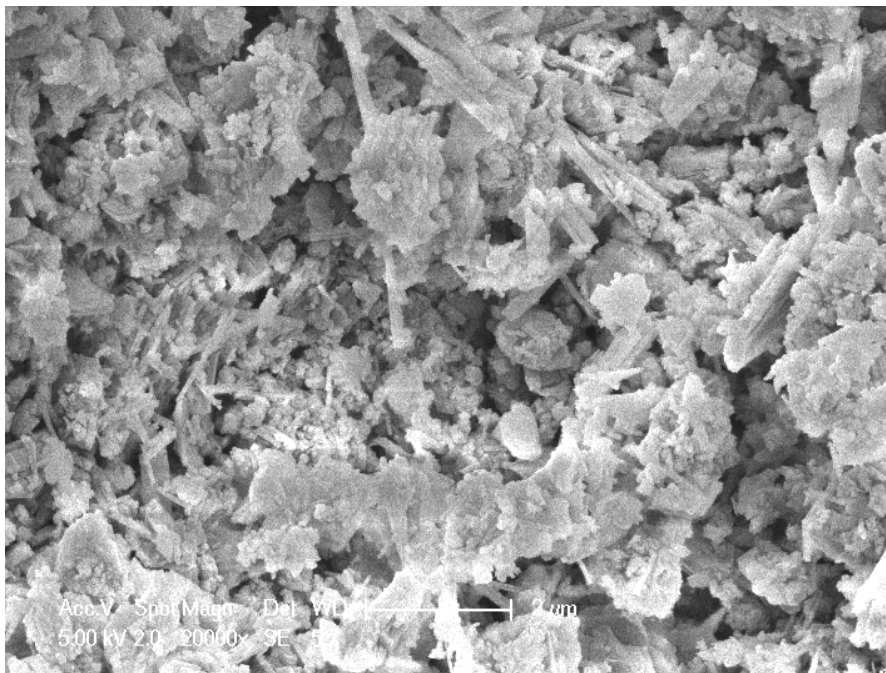


# NuFeed®

## IONIC ADSORBING POWER OF NUFEED

During the thermal alteration period amorphous material was washed from the clays leaving a 2D skeleton of aluminum and silica oxides, which, due to a unique configuration, have a high negative charge (cation exchange capacity; typically > 100 meq/100gm). Positively charged cations in solutions (or molecules suspended in air) can be adsorbed into the zeolite and, depending on cation concentration, charge characteristics and pH, can later be released.

The 3D skeleton has a large internal surface area (145m<sup>2</sup>/gm) with pore sizes in the lattice work that allow some molecules to enter and be trapped, whilst other are excluded. Geologically young zeolites like NuFeed® tend to have less blockages in the lattice work and are therefore better able to adsorb more liquids than older, more glassy zeolites. A large internal volume enables these younger zeolites to adsorb up to 100% of their own weight as water/liquid.



# NuFeed®

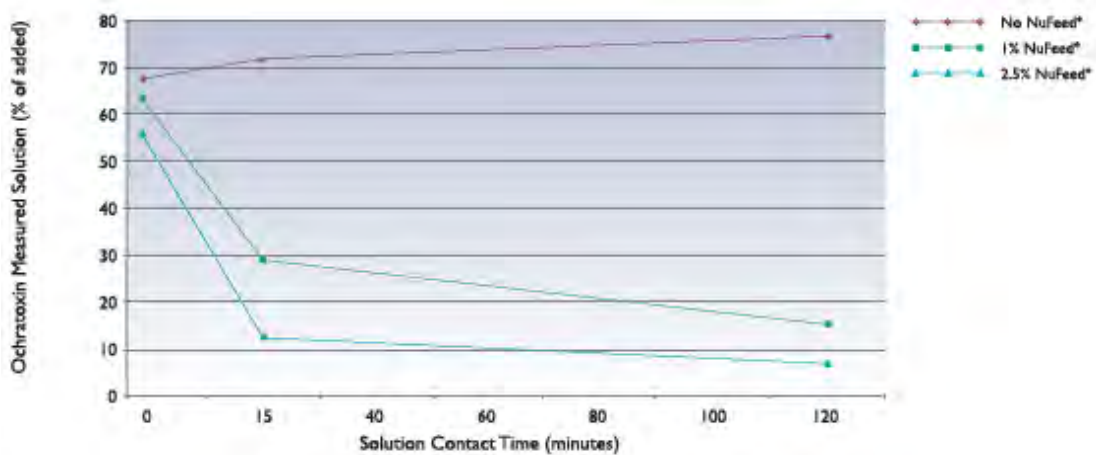
## MYCOTOXIN ADSORPTION BY NUFEED

Studies performed to measure the mycotoxin adsorption capability of NuFeed® when added to animal feeds. NuFeed® was shown to bind toxins, ammonia, and other gases, aid pelleting and feed flow ability and improve mineral utilization.

Due to their unique structure of New Zealand's "young" zeolite, NuFeed® naturally adsorbs a number of mycotoxins in feed. Independent New Zealand studies have measured the adsorption capacity of NuFeed®

### Experiment 1

The first study involved an in vitro adsorption assay measuring the effect of NuFeed® added at either 1% or 2.5% to an artificial gastric juice containing either 0.5g/mL or 2g/mL of ochratoxin A. This toxin occurs throughout the world and has shown medium binding to some commercial aluminosilicate feed additives. Results of this experiment showed that addition of 1% NuFeed® reduced the free ochratoxin in solution by 50-60% within 15 min, and by 70-80% after 120 min. Addition of (2.5%) NuFeed® increased adsorption by removing about 80% of the free solution ochratoxin by 15 min and 94% by 120 min.



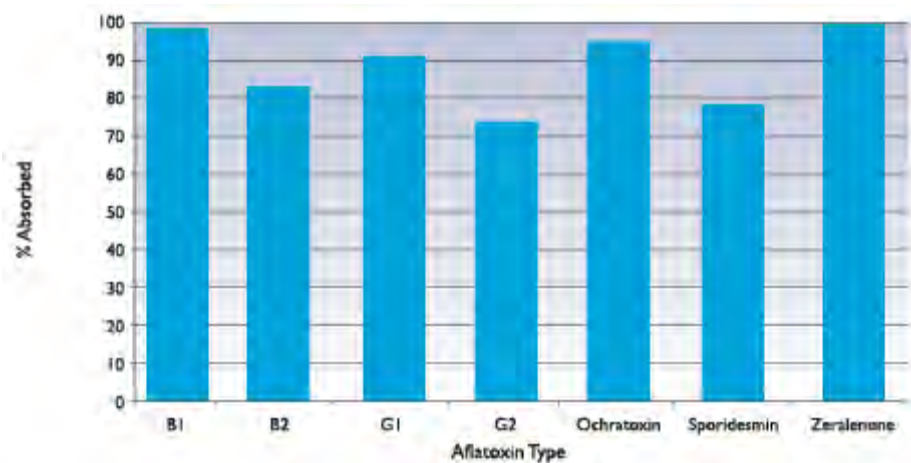
# NuFeed®

## Experiment Two

The second study investigated NuFeed® adsorbency in an artificial gastric juice on the aflatoxins B1, B2, G1 and G2 each at 50 and 100 ng/ml (equivalent to 50 and 100 mg toxin/kg feed respectively)

NuFeed® was added at 1% and 2.5% levels.

At 1% NuFeed® all free Aflatoxin B1 and G1 in solution was removed within 15 minutes and 98% of Aflatoxins B2 and G2.



# NuFeed®

## HOW TO USE NuFeed®

Simply mix 0.25% to 5% (w/w) with rations and feed normally. Addition rates depend on circumstances and objectives; New Zealand dairy cows have been fed as much as 1 kg NuFeed®/day (6.25% addition rate) over summer with no side-effects.

NuFeed® added to calf meal has resulted in a significant reduction in scours.

- NuFeed® is an excellent carrier and can be amended to carry ration additives.
- NuFeed® improves egg shell quality in moulted layer birds.
- The fine particle size of NuFeed® ensures easy mixing and additions assist pelleting processes and enhance pellet strength.
- NuFeed® is available in loose bulk, bulk bags, and 25kg bags.
- Inclusion of NuFeed® into rations is cost effective. Please see your local NuFeed® representative for pricing.
- For more reference information on feeding animals NuFeed® (or similar minerals), please see your local representative, or contact our company office.
- A natural product
- Small particle size aids mixing
- Pellet strength improves
- Pelletising process improved



# NuFeed<sup>®</sup>

## Product Technical Data Sheet

Description	VolcaMin™ produced from quality Hydrated Ca-Na-K Aluminosilicates/ mordenite or clinoptilolite zeolite
Appearance	Powder, creamy white in colour
Typical Application	As a toxin binder in animal feeds, process aid and as a chemical/probiotic carrier
Inclusion rate	0.25%- 5% per tonne
Pack sizing	Branded 25kg Multi Wall paper valve bag Branded 1m <sup>3</sup> Bulk Bag with discharge spout

### Typical Chemical Analysis – XRF - %

SiO <sub>2</sub>	Silica	71
Al <sub>2</sub> O <sub>3</sub>	Alumina	13
Fe <sub>2</sub> O <sub>3</sub>	Ferric	1.2
MgO	Magnesium	0.6
CaO	Calcium	1.5
Na <sub>2</sub> O	Sodium	2.0
K <sub>2</sub> O	Potassium	4.0
LOI	Loss on ignition	6.5

### Typical Physical Properties

Bulk density	0.55-0.65gm/ cm <sup>3</sup>
Porosity	60%
Slurry pH	8.65 (10% aq. Suspension)
CEC	100-120meq/ 100gm
Surface area	120-130m <sup>2</sup> / gm
Pore size	7 Angstroms
Size	99% passing 0.80mm
Moisture	4%- 8%

Australian Distributor:  
Agtech Natural Resources  
[www.agtechglobal.com.au](http://www.agtechglobal.com.au)  
1800 200 187

